

TOSHIBA



HAORI



Built-in WIFI



Ultra-Pure Filter

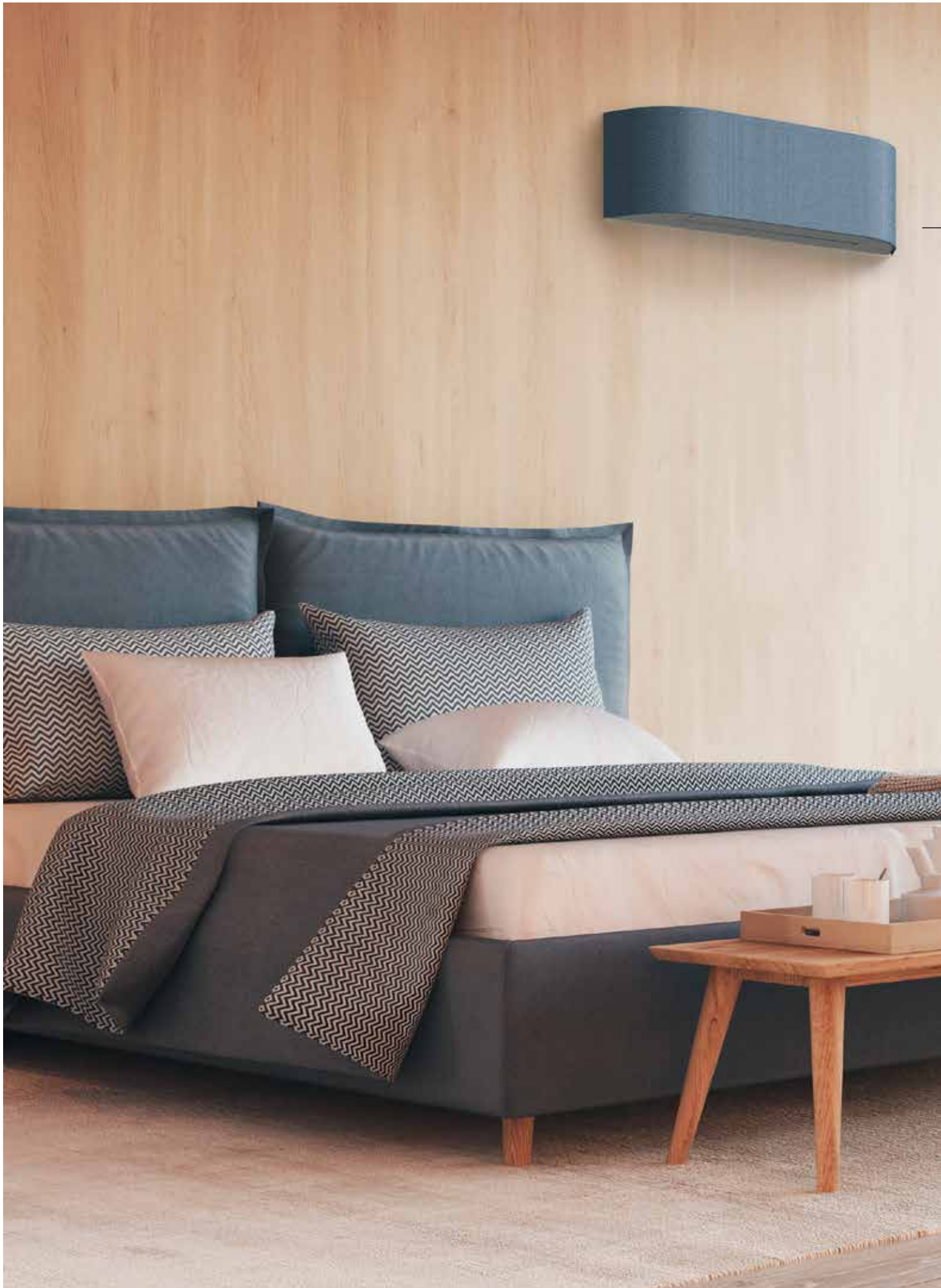


Plasma Ionizer



A Designer Choice







TRULY ELEGANT DESIGN

HAORI is featuring
a stylish textile
fabric cover

A modern living room interior featuring a beige sofa, a dark metal side table, and a textured wall. The text "LET YOUR STYLE BE YOUR GUIDE" is overlaid on the right side of the image.

LET YOUR STYLE BE YOUR GUIDE

Fabrics with **infinite possibilities.**
Easy to dress, just peel and stick.



Bluish grey



Dark grey



Light Grey



Grey beige



Dark brown



Emerald blue

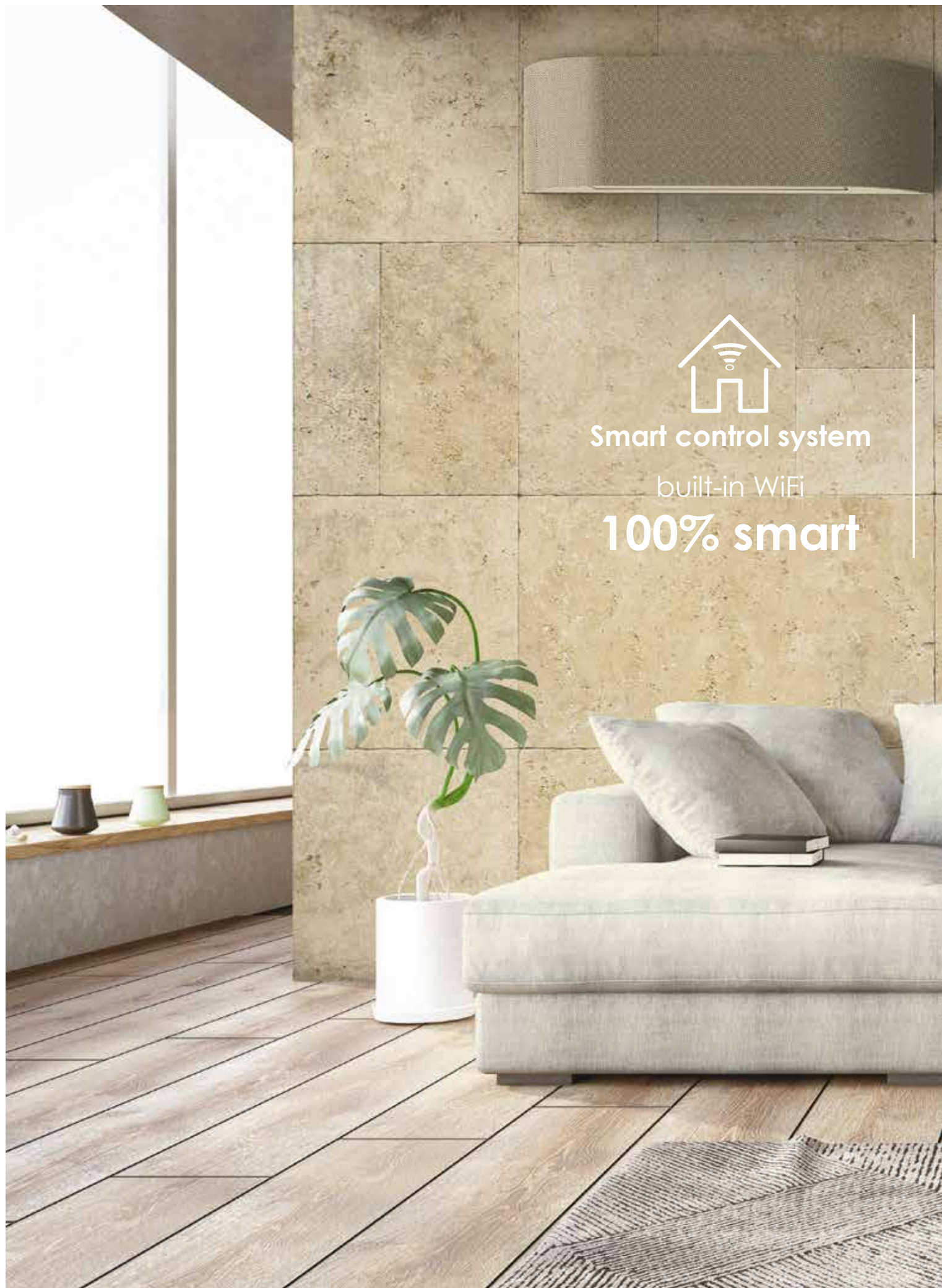




Smart control system

built-in WiFi

100% smart





Ultra-quiet system

Down to

19 dB(A)



Silent operation

Down to

39 dB(A)

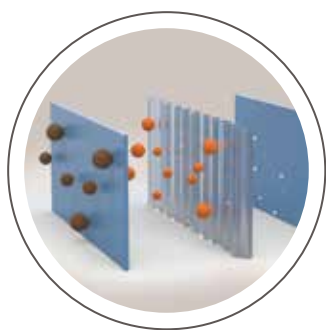


Data from RAS-B10E2KVRG-A



TOSHIBA ABSOLUTE INDOOR AIR QUALITY

The fabric cover in this image is a user-made example



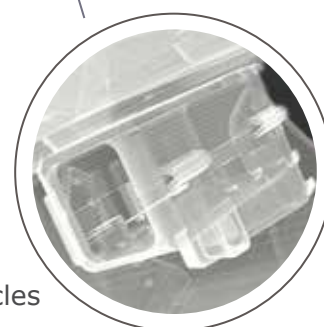
TOSHIBA ULTRA PURE FILTER

Toshiba ultra pure filter captures up to 94% of PM 2.5



TOSHIBA PLASMA IONIZER

Catches & neutralizes the contaminated particles





TREAT YOURSELF TO JAPANESE QUALITY

Design and Reliability

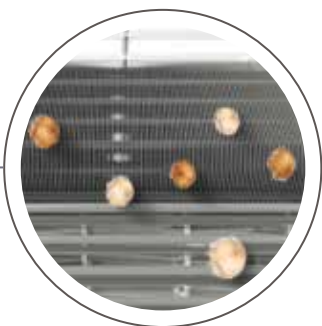
Innovation, efficiency, high reliability, energy savings - These are the powerful values at the heart of everything we do at Toshiba.

For over 50 years, Toshiba has been providing its customers with the precision and expertise of Japanese quality.

Toshiba's Inverter Technology

Toshiba's innovative rotary compressor technology combines exemplary performance with outstanding reliability. Minimising fluctuations to ensure a constant temperature, it increases efficiency while significantly reducing the risk of incidental noise.

Toshiba's Inverter allows the HAORI to regulate heating and cooling capacity at all times, by adjusting the compressor speed.



TOSHIBA MAGIC COIL

Always as clean
as new



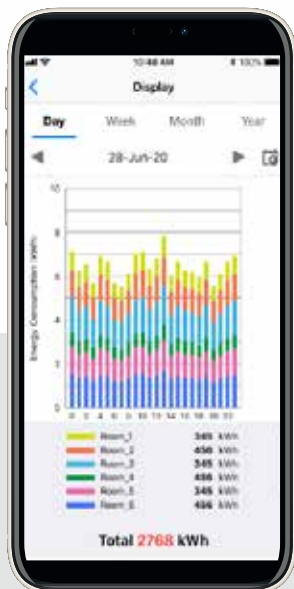
MAKE YOUR AIR CONDITIONER SMART

Enhance your comfort
at home or away



Download on the
App Store

ANDROID APP ON
Google play



- Energy monitoring
- Smart speaker voice control functions compatible with Google Home Assistant & Amazon Alexa



SOLUTION WELL-BEING



This intuitive remote control functions include:
Power select and ECO modes to reduce energy bills, Hi-power for rapid cooling or heating.

Toshiba HAORI remote control features a magnetic wall-mounted holder.

| Indoor | | | RAS-B10E2KVRG-A | RAS-B13E2KVRG-A | RAS-B16E2KVRG-A |
|---|----|---------|--------------------|--------------------|---------------------|
| Outdoor | | | RAS-10E2AVRG-A | RAS-13E2AVRG-A | RAS-16E2AVRG-A |
| Cooling Capacity - Rated | CO | kW | 2.50 | 3.50 | 4.60 |
| Cooling Capacity - Range | CO | kW | 0.89 - 3.20 | 1.00 - 4.10 | 1.20 - 5.30 |
| Power input [rated (min - max)] | CO | kW | 0.54 (0.19 - 0.79) | 0.80 (0.23 - 1.12) | 1.35 (0.29 - 1.72) |
| Operating current [rated (min - max)] | CO | A | 0.25 | 0.28 | 6.72 (1.75 - 8.30) |
| EER [rated (min - max)] | CO | | 4.63 (4.68 - 4.05) | 4.38 (4.35 - 3.66) | 3.41 (4.14 - 3.08) |
| Heating Capacity - Rated | RC | kW | 3.20 | 4.20 | 5.50 |
| Heating Capacity - Range | RC | kW | 0.90 - 4.70 | 1.00 - 5.30 | 1.10 - 6.30 |
| Power input [rated (min - max)] | RC | kW | 0.74 (0.18 - 1.23) | 1.08 (0.20 - 1.55) | 1.52 (0.24 - 1.90) |
| Operating current [rated (min - max)] | RC | A | 0.25 / 3.30 | 0.28 | 7.35 (1.36 - 9.21) |
| COP [rated (min - max)] | RC | | 4.32 (5.00 - 4.00) | 3.89 (5.00 - 4.42) | 3.62 (4.58 - 3.32) |
| Indoor Unit | | | | | |
| Airflow Volume (High/Mid/Low) | CO | l/s | 167 / 128 / 83 | 186 / 136 / 89 | 192 / 139 / 94 |
| Mositure removal | | l/hr | 1.50 | 2.00 | 2.50 |
| Dimension (WxLxH) | | mm | 300x987x210 | 300x987x210 | 300x987x210 |
| Net Weight | | kg | 11 | 11 | 12 |
| Sound Power at Cooling Operation (high) | CO | dB | 54/59 | 56 | 58 |
| Indoor Fan Motor Output | | W | 30 | 30 | 30 |
| Outdoor Unit | | | | | |
| Dimension (WxLxH) | | mm | 550x780x290 | 550x780x290 | 550x780x290 |
| Net Weight | | kg | 26 | 30 | 33 |
| Cooling Operating range (Inside/Out-side) | CO | °C | 21-32 / 10-46 | 21-32 / 10-46 | 21-32 / 10-46 |
| Heating Operating range | RC | °C | 0-28 / 15-24 | 0-28 / 15-24 | 0-28 / 15-24 |
| Sound Power at Cooling Operation (high) | CO | dB | 58 | 60 | 62 |
| Outdoor Fan Motor Output | | W | 43 | 43 | 43 |
| Pipe Size | | | | | |
| Liquid Side | | (mm) | 6.35 | 6.35 | 6.35 |
| Gas Side | | (mm) | 9.52 | 9.52 | 12.7 |
| Maximum Piping Length | | (m) | 20 | 20 | 20 |
| Maximum Piping Height difference | | (m) | 12 | 12 | 12 |
| Pre-Charge Length | | (m) | 15 | 15 | 15 |
| Compressor type | | | Single rotary type | Single rotary type | Single rotary type |
| Power Supply | | V/ph/Hz | 220-240 / 1 / 50 | 220-240 / 1 / 50 | 220-240 / 1 / 50 |

HAORI

Toshiba is committed in improving its products to ensure the highest quality and reliability standards, and to meet local regulations and market requirements.

Product specification in this Brochure are only indicative and are subject to change. These are not intended to be used in place of the engineering or installation databook / manual. All specification and features are subject to change without prior notice. All images provided in this catalogue are used for illustration purpose only.

Cooling and heating capacities mentioned are at standard operating conditions.

Catalogue Part Number: 01072022
Date: July 2022

Equipment rates in accordance with
GEMS 2019 Determination



IEEE

Toshiba, the world's 1st inverter Air Conditioner

SALES AND SERVICE- 13 COOL (132665)
AHIC (Australia) Pty Ltd- Level 1, 152 Wellington Road, Clayton, Victoria 3168
ABN: 37606792456

TOSHIBA